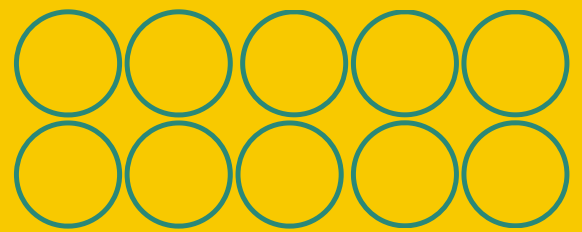




2025 FCDE ANNUAL REPORT



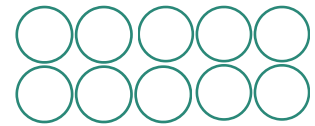
**Working Together.
Building Collective Power.**





LETTER FROM

OUR EXECUTIVE DIRECTOR



Dear Friends and Partners,

2025 brought real momentum. Our partner network grew from 30 to 44 organizations, reaching 58,615 people through locally led programs across Uganda. Communities launched bakeries, youth initiatives, environmental projects, and advocacy efforts for their most vulnerable members.

This work belongs to the local leaders who show up every day. FCDE's role is to bridge the gap—connecting a diverse range of resources with community vision, helping strong grassroots organizations access the support they need to scale their impact.

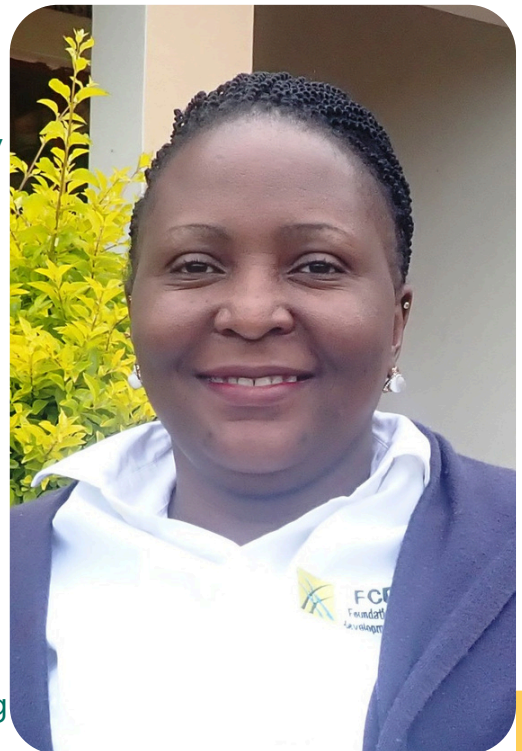
Behind every number in this report is a person whose life looks different than it did a year ago. That's what matters most.

As we look to 2026, we're grateful for our partners who do the real work, for funders who trust our model, and for every community that chose to partner with us.

The path forward is bright because of the leaders walking it.

With appreciation,

Sylvia Kabugho
Co-Executive Director, FCDE

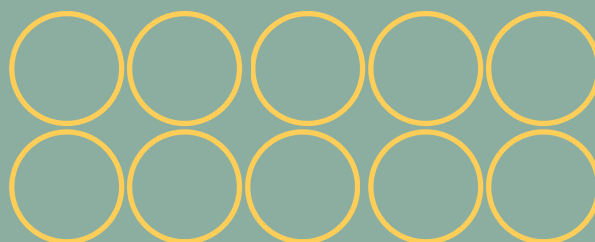
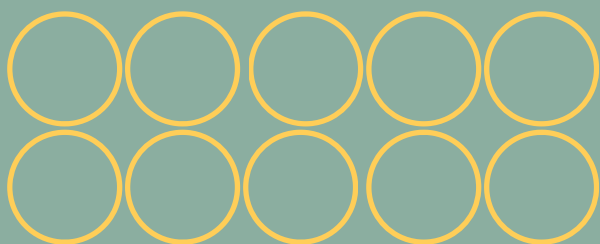




INTRODUCTION WHO WE ARE

FCDE- the Foundation for Community Development and Empowerment- is a capacity-building organization rooted in a simple but powerful belief: that the communities closest to a problem are best placed to solve it.

We work across Uganda partnering with grassroots local organizations to strengthen their capacity, expand their reach, and deepen their impact. We are not here to do the work for communities- we are here to ensure that communities have everything they need to do it themselves.



OUR MISSION

We build local capacity to lead community change in rural East Africa.



OUR VISION

Locally led development transforms lives.



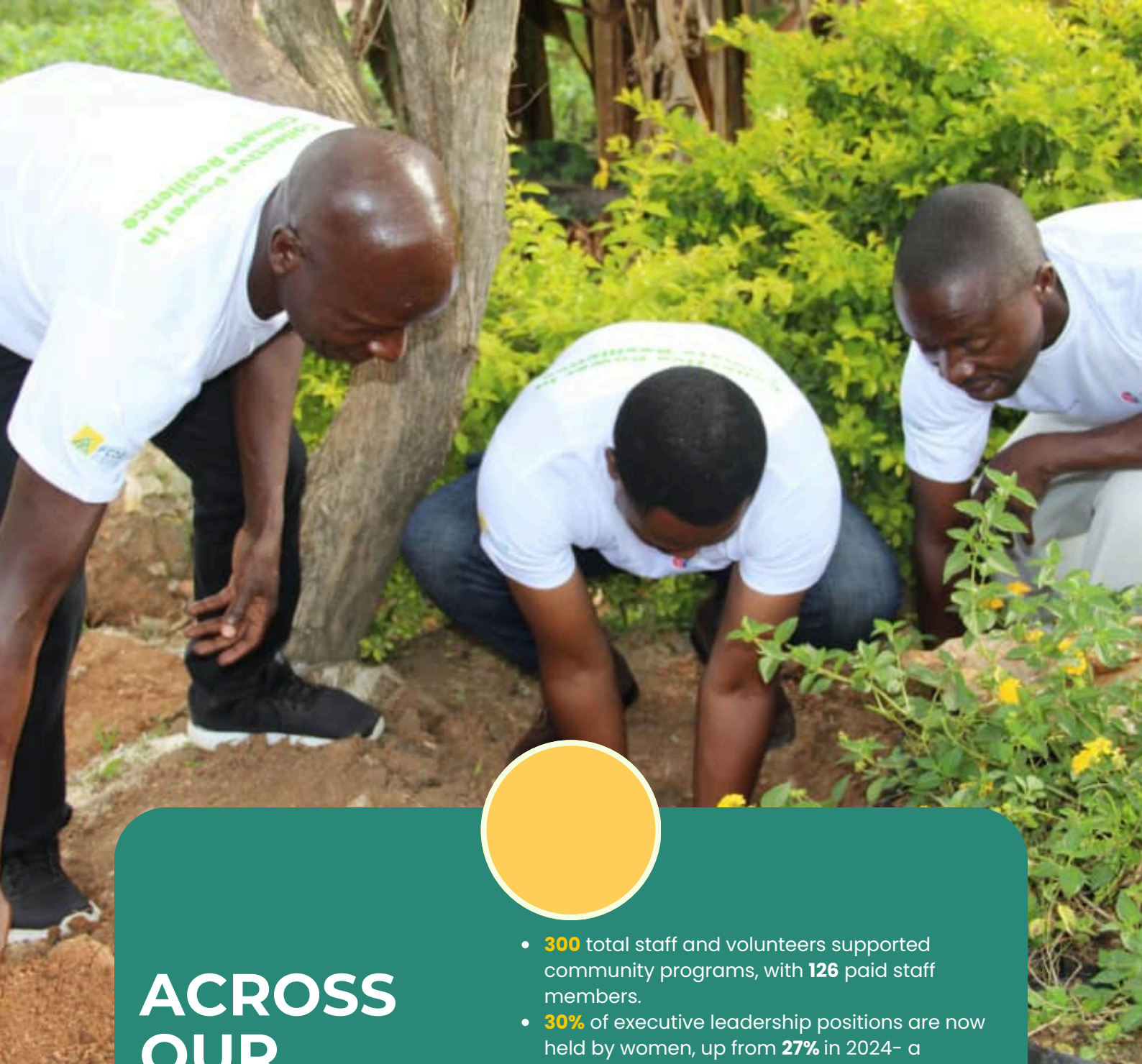


OUR PARTNERS AND NETWORK GROWTH

At the heart of FCDE's model is the belief that local organizations — when properly supported — are the most effective agents of lasting change. In 2025, that belief was validated in compelling ways.

Our active partner network grew from 30 Local Partner Organizations (LPOs) in 2024 to 44 in 2025 — a 47% increase representing new communities, new leaders, and new possibilities across Kasese, Rukungiri, and the newly onboarded cohort in Mbale district.

These 44 organizations are not a uniform group. They range from established Impact Partners with strong systems and proven track records, to emerging Tier 1 organizations just beginning their organizational development journey. FCDE's tiered partnership model recognizes that growth is not linear, and that every organization deserves support calibrated to where they are — not where we wish they were.



ACROSS OUR PARTNER NETWORK IN 2025:

- **300** total staff and volunteers supported community programs, with **126** paid staff members.
- **30%** of executive leadership positions are now held by women, up from **27%** in 2024- a meaningful and growing shift.
- **84** formal partnerships between LPOs and other organizations were reported, **11** of which were directly facilitated by FCDE- demonstrating our growing role as a connector within the ecosystem.
- **91%** of partner organizations participated in at least one capacity-building training during 2025
- The additions of **9** new Mbale-based organizations as a baseline cohort marks an exciting geographic expansion. These organizations arrive with strong foundations - a **32%** grant success rate from their very first year of engagement- and represent a promising new chapter in FCDE's regional growth



WHAT WE ARE FOCUSED ON

Strengthening M&E systems across the partner network remains one of our most urgent capacity-building priorities. Only 41% of partners currently have M&E systems in place. In 2026, we will launch a targeted support initiative to help the remaining organizations build the data systems they need to track, report, and learn from their own impact.

Improving grant success rates for Tier 1 and Tier 2 organizations is equally important. Impact Partners achieved a 54% grant success rate in 2025—proof that organizational maturity translates directly into fundraising effectiveness. We will continue to provide proposal writing workshops, peer mentorship, and coaching to help emerging partners reach this level.

Addressing the digital divide within our partner network is a matter of equity. With 14 organizations lacking internet access and 4 without functional computers, we will work to identify partnerships and resources that ensure all partners have the technology they need to communicate, collaborate, and grow.

Supporting income diversification among partners is a long-term resilience strategy. The rise in corporate donations from 4% to 12% is encouraging. In 2026, we'll continue helping partners explore earned income opportunities and corporate partnerships to reduce over-reliance on grant funding.

We don't do this work alone. We do it with 44 partner organizations leading change in their communities, with funders who believe in locally led development, and with our team across Uganda who show up with skill and commitment every day.

We're grateful you're part of this journey.

IMPACT BY THE NUMBERS



58,615

People reached directly through partner programs in 2025

143

Grant proposals written and submitted by partners in 2025

44

Active Local Partner Organizations across Kasese & Rukungiri

UGX 5.27B

Total annual revenue generated across all partner organizations

91%

Of partners participated in capacity-building training

39%

Increase in combined partner revenue year-on-year

30%

Grant proposal success rate across the partner network

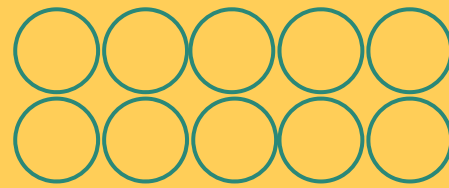
47%

Growth in FCDE's partner network since 2024





LOOKING AHEAD: 2026 AND BEYOND



The momentum of 2025 carries us into 2026 with clarity, purpose, and genuine excitement for what lies ahead. Our partner network has never been larger, more diverse, or more capable.

The 9 Mbale organizations joining our cohort this year represent the next frontier of FCDE's geographic reach – and their early energy and commitment suggest they will grow quickly. We will support them with the same tailored, relationship-centered approach that has characterized our work in Kasese and Rukungiri.



Contact Us

info@fcde-dev.org



Our Website

<https://fcde-dev.org/>

